

# Spring Semester Assessment Update for Department & Program Leaders

---

February 6, 2023

[hope.edu/assessment](https://hope.edu/assessment)

# Information this assessment update will provide:

1. Mapping program outcomes to our Common Learning Outcomes
2. Demonstrating a pattern of assessment at Hope College
3. Changes to our normal reporting timeline for 2022-23 program assessment
4. Heighten Critical Thinking Assessment
5. Heighten Intercultural Competency & Diversity Assessment
6. Identifying department assessment structure & faculty engagement

# 1. Mapping Program Outcomes to Common Learning Outcomes

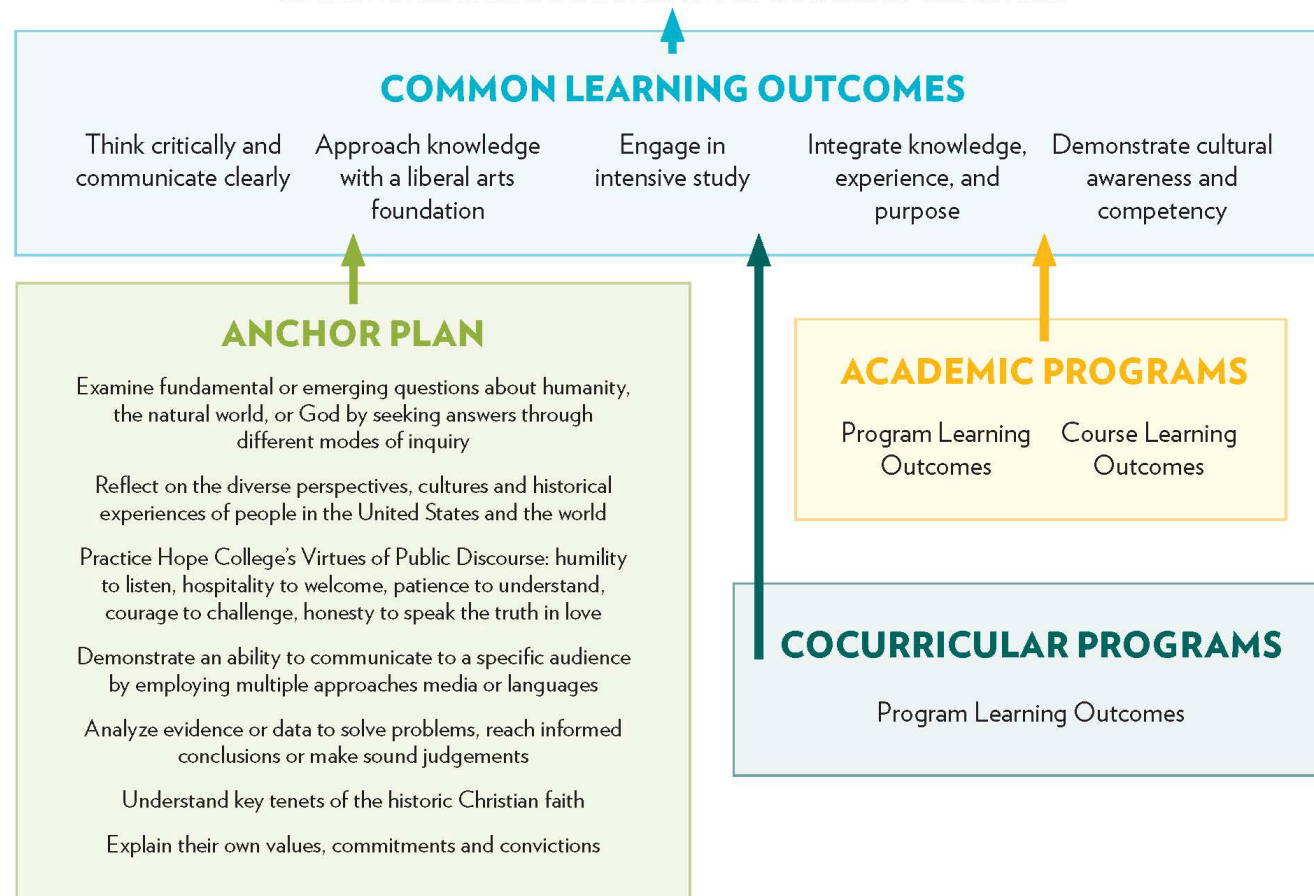
Hope College has five Common Learning Outcomes for all Hope students to meet by the time they graduate

[hope.edu/assessment](http://hope.edu/assessment)



## STUDENT LEARNING OUTCOMES

The mission of Hope College is to educate students for lives of leadership and service in a global society through academic and cocurricular programs of recognized excellence in the liberal arts and in the context of the historic Christian faith.



**Hope** COLLEGE

# Curriculum Map: Curricular/Cocurricular Program to Common Learning Outcomes

Program Name:

Date:

Program Learning Outcomes Knowledge, skill, or behavior students can demonstrate upon program completion		Common Learning Outcomes Knowledge, skill, or behavior students can demonstrate upon degree completion				
		Common Learning Outcome 1 Think critically and communicate clearly	Common Learning Outcome 2 Approach knowledge with a liberal arts foundation	Common Learning Outcome 3 Engage in intensive study	Common Learning Outcome 4 Integrate knowledge, experience, and purpose	Common Learning Outcome 5 Demonstrate cultural awareness and competency
1						
2						
3						
4						
5						
6						
7						
8						

## Submitting your mapping:

1. Enter your program learning outcomes as listed at [hope.edu/assessment](http://hope.edu/assessment)
2. For each outcome, indicate the Common Learning Outcomes to which it maps by placing an "X" in that cell
3. The template is formatted: please complete in Word and send as an attachment to [kremerk@hope.edu](mailto:kremerk@hope.edu) by May 1, 2023

## 2. Demonstrating a pattern of assessment

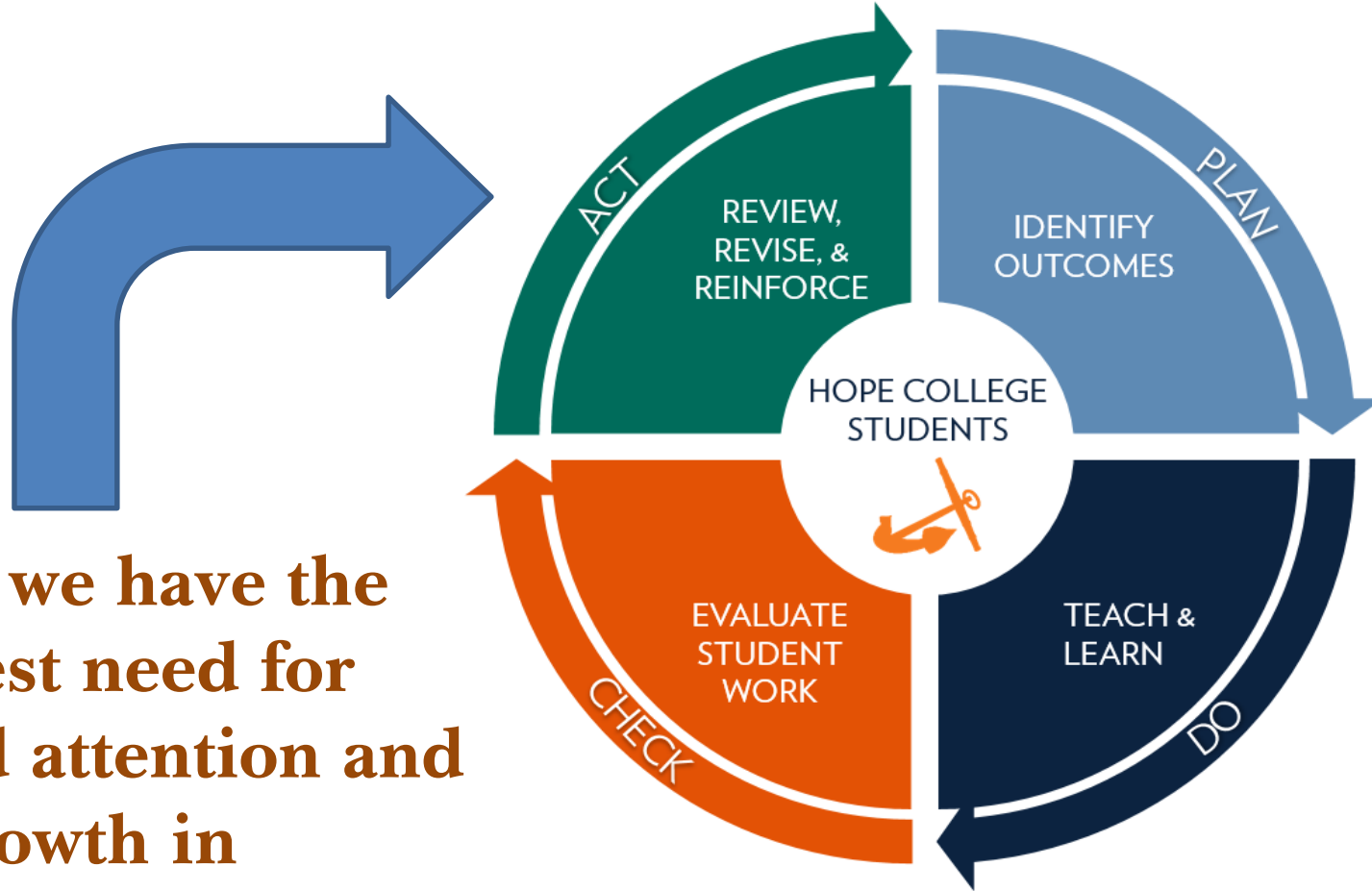
### *Assessment:*

- Demonstrates that we provide the education we say we are providing
- Identifies areas for *curriculum improvement* and changes in *what we provide to our students*
- Ensures equity in student progress toward our stated learning outcomes

---

We provide evidence to external organizations that we assess student learning & use results for continuous improvement, *but this is not why we assess*

# Assessment for learning: Plan-Do-Check-Act cycle



Where we have the greatest need for increased attention and growth in understanding

### 3. Changes to 2022-23 assessment reporting

Hope's HLC Comprehensive Evaluation site visit is September 18-19, 2023  
Our HLC documents (our written evidence) are finalized in June, 2023  
However, Hope's Assessment Reports aren't due until October 1, 2023

For our 2022-23 assessment reporting to be included in our HLC documents,  
reports need to be submitted early

#### The request:

- If your program assessments completed in 2022-23 can be reviewed and reported in the Assessment Portal before Memorial Day, our HLC Assurance Argument will be significantly strengthened

# Reporting through the Assessment Portal

- Before you enter your report(s):
  - Review the assessment data you collected with your department colleagues
  - Identify improvements/action steps you will take to improve student learning
  - Visit the Assessment Resources page at [hope.edu/assessment](https://hope.edu/assessment)
  - Find your Assessment Portal User Name and Password (or email [frostcenter@hope.edu](mailto:frostcenter@hope.edu))
  - Enter the correct portal for the report you are submitting
  - Access completed reports in the [Hope College Assessment Reports](#) folder



# Access the portal & reports at [hope.edu/assessment](https://hope.edu/assessment)

## ASSESSMENT PORTAL

<b>PROGRAM ASSESSMENT PORTAL</b>	<b>CO- CURRICULAR ASSESSMENT PORTAL</b>	<b>COMMON OUTCOMES ASSESSMENT PORTAL</b>	<b>GENERAL EDUCATION ASSESSMENT PORTAL</b>
--	---	--	--

## COMPLETED ASSESSMENT REPORTS

**HOPE COLLEGE ASSESSMENT REPORTS →**

## 4. Heighten Critical Thinking Assessment

Notify [kremerk@hope.edu](mailto:kremerk@hope.edu) by February 10 if you plan to use the Critical Thinking Assessment this semester

- Heighten assessments are nationally-benchmarked, direct assessments
- For Common Learning Outcome and General Education Assessment
  - We use aggregate Hope senior results (summative assessment) – this relies on department use of the tool for an adequate sample of Hope seniors
- For Program Assessment
  - We provide your students' scores with a Hope benchmark and a national benchmark

# 5. Heighten Intercultural Competency & Diversity Assessment

Notify [kremerk@hope.edu](mailto:kremerk@hope.edu) by February 10 if you plan to use the Intercultural Competency & Diversity Assessment this semester

- **Heighten assessments are nationally-benchmarked, direct assessments**
  - Intercultural Competency & Diversity Assessment
    - Beginning January 2022, ETS contracted with Territorium to administer – same data, easier for students to use, but some hiccups in aggregate reports
- **For Common Learning Outcome and General Education Assessment**
  - We use aggregate Hope first-year and senior results (formative assessment) – this relies on faculty members' support of student participation
- **For Program Assessment**
  - We provide your students' scores with a Hope benchmark and a national benchmark



## 6. Department assessment structure & faculty engagement in program assessment activities

- The Higher Learning Commission expects that faculty members lead and are “substantially” engaged in assessment of student learning within our academic programs
  - We provide evidence that this is happening within our HLC Assurance Argument
- Your help is needed to gather this evidence
  - Department chairs answer four questions at <https://forms.gle/nKnYfCDSruk9DjMU7>
  - Complete by the end of February so information can be aggregated

# Dates to Remember

- **February 10** – Notify [kremerk@hope.edu](mailto:kremerk@hope.edu) if your program or departments plans to use the Critical Thinking or Intercultural Competency & Diversity Assessment this semester
- **February 28** – [Submit google form](#) with information on your department assessment structure
- **May 1** – Send completed Program to Common Learning Outcome Mapping to [kremerk@hope.edu](mailto:kremerk@hope.edu)
- **May 29** – When possible, enter 2022-23 assessment reports into the [Hope College Assessment Portal](#) (one-time change in our regular schedule)



Kathy S. Kremer

Sr. Director of Assessment and Accreditation

[kremerk@hope.edu](mailto:kremerk@hope.edu)

616-395-7508 (voicemail)

616-204-4588 (text or call)