

ASSESSMENT UPDATE

March 2024

Please read and take action as you wrap up the Spring Semester!

IN THIS NEWSLETTER

Immediate Action Required: Critical Thinking Assessment

Anchor Plan Artifact Collection

Hold on Submitting Assessment Reports

Fall 2023 Changes to your Program Curriculum Mapping

Learning Outcomes Cards

Keep Calm & Continue Assessing

Funding for Assessment Activities

ACTION REQUIRED: CRITICAL THINKING ASSESSMENT

If your department or program has not had your seniors' critical thinking assessed as part of the college-wide process, please provide us with the following. Send to kremerk@hope.edu and cc: frostcenter@hope.edu.

- 1) a list of the student names/email addresses to whom the assessment should be sent,
- 2) the date when the email with the assessment link should be sent out to your students, and
- 3) encouragement of your students by you and your faculty to reach a high completion rate on the assessment so your department results are meaningful.

Additional Info:

We administer the ETS-developed Critical Thinking Assessment to seniors from all departments. This direct assessment of students' analysis and synthesis

skills is used to assess individual program outcomes, Anchor Plan Outcome 5, and [Common Learning Outcome 1](#).

Each academic department or program decides at what point their majors are assessed. In some programs, there is a senior-level course where it is included. In other departments and programs, students complete the assessment in the semester of their graduation. It can be administered in fall, spring, or summer sessions – whatever works best for you. The work of administering the assessment (including the cost) is handled entirely by the Assessment Office in Frost Center.

ANCHOR PLAN ARTIFACT COLLECTION BEGINS THIS SEMESTER

Departments that offer courses with the following attributes mapped to Anchor Plan Outcome 1 (SS, MNS, MA, NSL, HST 100-level, HCP 100-level, PHL 100-level, RL2) or Outcome 4 (NSL, ART, HST 200-level, HCP 200-level, PHL 200-level) are required to collect artifacts each semester beginning in Spring 2024. These artifacts are due to your Dean's Office by July 1.

Please chat with your faculty and office manager about collecting artifacts for Anchor Plan assessment purposes. Your office manager likely attended a training on this at the end of the Fall Semester. If you have any questions, please contact Chad Carlson, Director of General Education (carlsonc@hope.edu).

Links to Assessment Resources

[Anchor Plan Assessment Information and Resource Guides](#)

[Curricular Program Assessment Plans](#)

[Cocurricular Program Assessment Plans](#)

[Assessment Updates and Due Dates](#)

[HLC Review Team Report](#) (see pages 34-35 for evaluation of Hope's assessment activities)

To learn more about assessment of student learning, [explore the Hope College Assessment website](#)

HOLD ON SUBMITTING ASSESSMENT REPORTS

Public Affairs & Marketing is improving our assessment reporting system. At this point, please hold off on submitting your assessment reports until the new system is in place later this semester. We will let you know when it is operational.

The form and questions will not change, however, the system used to submit reports will be easier to use and similar to Hope's minutes and agendas submission and access process. Stay tuned.

ACTION ITEM: FALL 2023 CHANGES TO PROGRAM CURRICULUM MAPPING

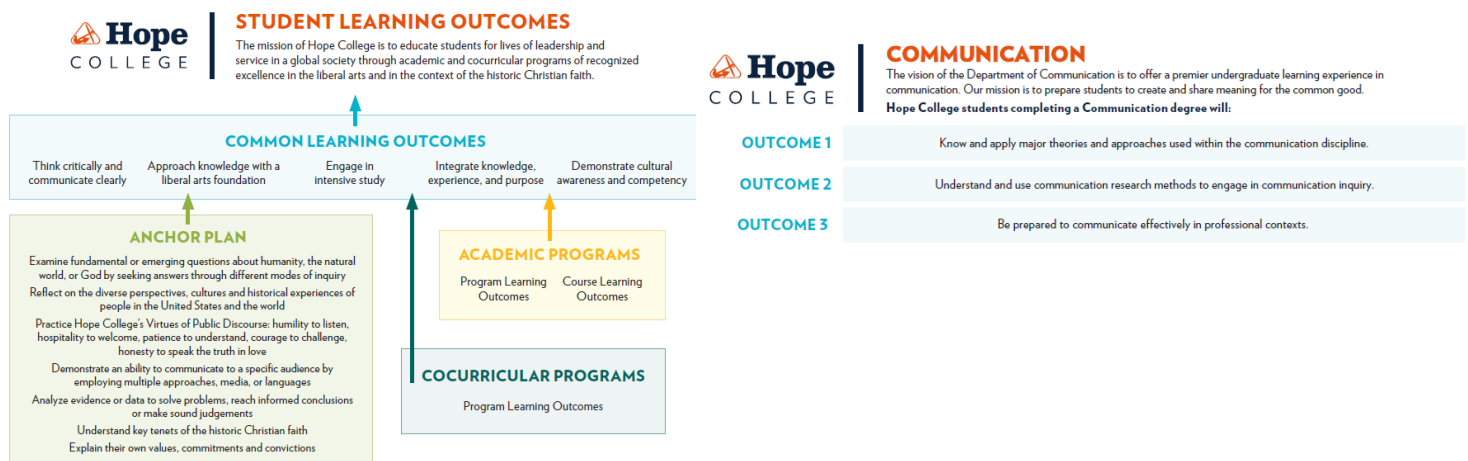
With our Fall 2023 changes to general education and the move from a 4 to 3-credit norm, many academic programs made curricular changes that included new and discontinued courses.

Please look at your program outcome mapping (see page 1 of your Assessment Plan on the [Program Learning Outcomes page](#)) to make sure it is current. Send any revisions to your mapping to kremerk@hope.edu by April 5th.

LEARNING OUTCOMES CARDS

The Assessment Office prints two-sided cards that illustrate how your program outcomes, the Anchor Plan Outcomes, and the Common Learning Outcomes work together in a Hope education. They are a nice tool for faculty members to share with students during this advising season.

[Order your student learning outcome cards here!](#) There is no cost to your department for the cards and they can be delivered to your department within 24-48 hours.



2023-24 Assessment Committee Members

Reach out to your divisional representatives or any of the individuals listed below if you have questions about Hope's assessment processes and policies or the work of the committee.

Kathy Kremer (Chair) Assessment & Accreditation

Daniel Woolsey (Secretary) Humanities

Julia Gillespie, Alumni & Family Engagement

John Jobson, Student Development

Don Friesner, Institutional Research

Joshua Abbas, Student Congress

Eric Alsgaard, Student Congress

Chad Carlson, Director of General Education

Kara Brems, Arts

Ben Krause, Arts

David DeJong, Humanities

John Krupczak, Natural & Applied Sciences

Carrie Dummer, Natural & Applied Sciences

Paula Ferrara, Social Sciences

Allie Whitford, Social Sciences

Carrie Bredow, Academic Affairs Board Liaison

Tom Sura, Guest, Director of College Writing

KEEP CALM AND CONTINUE ASSESSING

My sincere thanks to the Hope College assessment leaders whom I have worked with over the last five years. Assessment of student learning has matured because of your partnership.

The Search Committee is well on its way and hopes to have a new Director of Assessment and Accreditation soon. My retirement agenda is full and I'm enjoying new adventures. When my Hope email address is also retired, you can find me on [LinkedIn](#).

Please share this newsletter with others in your department who lead the assessment of student learning. [Newsletters and assessment due dates can always be found in the Assessment Resources tab of our web pages.](#)

Thank you for everything you do to ensure curricular and cocurricular excellence for the benefit of Hope students!

All the best,



Kathy S. Kremer, PhD

Senior Director of Assessment and Accreditation

Hope College Accreditation Liaison Officer

Frost Center for Data and Research

Hope College

Anderson-Werkman Center

100 East 8th Street, Suite 267, PO Box 9000, Holland, MI 49422-9000

office [616.395.7508](tel:616.395.7508) | cell [616.204.4588](tel:616.204.4588)

kremerk@hope.edu | hope.edu

Does your department or program need funding for 2023-24 assessment activities?

If you do, please send an email to kremerk@hope.edu with your request. Requests for funding from the college fund for assessment are considered on a first-come, first-served basis until funding is depleted. Some examples include paying faculty stipends for off-contract assessment work, purchasing assessment tools such as a major field test, and providing incentives for student participation in assessment activities.